

(DANRE) mapk8 Antibody
Purified Rabbit Polyclonal Antibody (Pab)
Catalog # Azb18717a

Specification

(DANRE) mapk8 Antibody - Product Information

Application	WB,E
Primary Accession	Q9DGD9
Other Accession	P49187 , Q61831 , P53779 , P49186 , Q9WTU6 , P45984 , P79996 , Q8QHK8 , P49185 , Q91Y86 , P45983 , P92208 , Q8WQG9
Reactivity	Zebrafish
Predicted	C.Elegans, Drosophila, Human, Mouse, Rat, Xenopus, Chicken
Host	Rabbit
Clonality	Polyclonal
Isotype	Rabbit IgG
Calculated MW	44140
Antigen Region	183-215

(DANRE) mapk8 Antibody - Additional Information

Gene ID 65236

Other Names

Mitogen-activated protein kinase 8, MAP kinase 8, MAPK 8, Stress-activated protein kinase JNK1, c-Jun N-terminal kinase 1, mapk8, jnk1

Target/Specificity

This DANRE mapk8 antibody is generated from a rabbit immunized with a KLH conjugated synthetic peptide between 183-215 amino acids from the human region of DANRE mapk8.

Dilution

WB~~1:1000

E~~Use at an assay dependent concentration.

Format

Purified polyclonal antibody supplied in PBS with 0.09% (W/V) sodium azide. This antibody is purified through a protein A column, followed by peptide affinity purification.

Storage

Maintain refrigerated at 2-8°C for up to 2 weeks. For long term storage store at -20°C in small aliquots to prevent freeze-thaw cycles.

Precautions

(DANRE) mapk8 Antibody is for research use only and not for use in diagnostic or therapeutic procedures.

(DANRE) mapk8 Antibody - Protein Information

Name mapk8

Synonyms jnk1

Function Responds to activation by environmental stress and pro- inflammatory cytokines by phosphorylating a number of transcription factors, primarily components of AP-1 such as c-Jun and ATF2 and thus regulates AP-1 transcriptional activity. May play a role in the regulation of the circadian clock.

Cellular Location

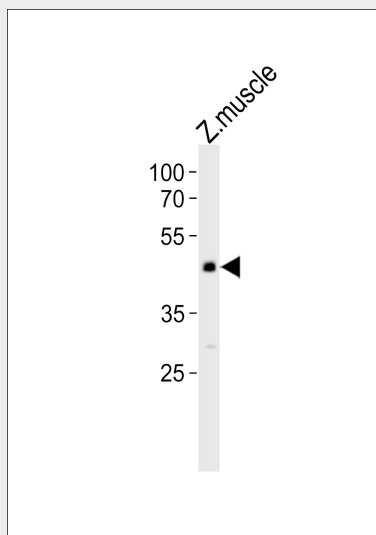
Cytoplasm {ECO:0000250|UniProtKB:P49185}. Nucleus {ECO:0000250|UniProtKB:Q91Y86}. Synapse {ECO:0000250|UniProtKB:P49185}

(DANRE) mapk8 Antibody - Protocols

Provided below are standard protocols that you may find useful for product applications.

- [Western Blot](#)
- [Blocking Peptides](#)
- [Dot Blot](#)
- [Immunohistochemistry](#)
- [Immunofluorescence](#)
- [Immunoprecipitation](#)
- [Flow Cytometry](#)
- [Cell Culture](#)

(DANRE) mapk8 Antibody - Images



Western blot analysis of lysate from zebrafish muscle tissue lysate, using (DANRE) mapk8 Antibody (Cat. #Azb18717a). Azb18717a was diluted at 1:1000. A goat anti-rabbit IgG H&L (HRP) at 1:10000 dilution was used as the secondary antibody. Lysate at 35ug.

(DANRE) mapk8 Antibody - Background

Responds to activation by environmental stress and pro- inflammatory cytokines by phosphorylating a number of transcription factors, primarily components of AP-1 such as c-Jun and

ATF2 and thus regulates AP-1 transcriptional activity (By similarity).

(DANRE) mapk8 Antibody - References

Fujii R.,et al.J. Cell Biol. 150:1335-1348(2000).